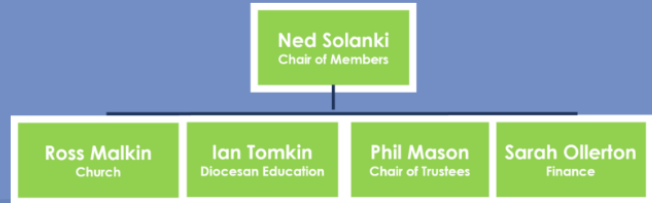


Members

The Trust Members are responsible for setting the vision of the Trust, amending the Articles of Association, appointing Members/Trustees and removing Trustees. Members hold Trustees to account for the effective running of the Trust.



Trustees

The Trustees are appointed with the skill set and expertise to take responsibility for the strategic priorities of the Trust and implementing the vision and ethos set by the members. At board meetings, Trustees have oversight of financial performance, agree targets for pupil achievement and monitor progress of schools. They hold executive leaders accountable for standards and performance of employees and review the performance and pay of school Principals and Chief Executive Officers, in conjunction with Chairs of Local Advisory Boards.



Local Advisory Boards

The main focus of the Local Advisory Boards is to hold individual schools and school leaders to account for school standards, behaviour, quality of teaching and safety of pupils. They set clear expectations, monitor and review progress and achievement for pupils and ensure that school spending represents good value for public money. They monitor and review the quality of teaching and learning, considering feedback from both parents and pupils and ensure that pupils are properly safeguarded. The chairs of all LABs are invited to attend Trustees meetings and present on key local issues, when appropriate.

